

essaSTONE™

Laminex®  
Inspire your space

Dulux®  
Worth doing, worth Dulux.

# Kitchens and Bathrooms

Colour | Schemes





To get this look use: Feature wall → Laminex Ice Veil. Main wall → Dulux Natural White W B1. Benchtops → Laminex Andalucian Marble. Lower cupboards → Laminex Ash White. Island bench → Laminex Andalucian Marble.

# Choosing Your New Kitchen & Bathroom

## Colour confidence

Choosing the perfect colour scheme for your new kitchen or bathroom can be daunting but help is at hand. The best place to start is right here using Dulux, Laminex® and essastone™ colour schemes followed by picking a selection of colour chips.

The Dulux, Laminex and essastone colour schemes are also a great help in choosing the perfect mix of colours for the rest of your home.



**COLOUR CONSULTANCY SERVICE** → Call 13 25 25

Dulux Henna Red TR \*CP A64, Dulux China White W B15, Dulux Ecru W A189.

It is always important to remember that colours can appear to change in larger areas and under different lights. Dulux Colour Solutions® Sample Pots are a great way to help test your paint colour selection.



# Making The Right Choices

## Paint

When choosing paint for your new kitchen or bathroom it's important to select a paint that will deliver moisture resistance and superior washability. Dulux Wash & Wear® Kitchen & Bathroom with Mouldshield® + Anti-Bacterial technology not only delivers the best washability but it is mould, bacteria and mark resistant as well. With a 7 year guarantee against mould growth it's also a Dulux Eco Choice® paint. This means it's low in VOCs (Volatile Organic Compounds) so it creates less air pollution and has almost no paint smells compared to paints with higher VOCs. By choosing Dulux Wash & Wear Kitchen & Bathroom you can be sure you're making the right choice for your walls and your family.

## Cabinets, cupboards and benchtops

It's essential to keep kitchen and bathroom surfaces hygienic therefore you need to choose surfaces that are easy to clean time and time again. Laminex surfaces are easy to maintain, cost-effective and provide excellent resistance to moisture and scratching. With a fully integrated colour palette across a complete range of laminates, surfaces and cabinet doors, Laminex is the best choice for your new kitchen or bathroom. If you prefer a contemporary stone benchtop, essaSTONE is remarkably durable and virtually maintenance free. Created with the latest engineering technology, essaSTONE has a beautiful design palette that is naturally at home with Dulux and Laminex colours in any kitchen or bathroom.



For accurate paint colour, select colour chips from the Dulux colour wall at your nearest paint store.

Choose your Laminex colours online at [laminex.com.au](http://laminex.com.au) or at a Kitchen & Bathroom decorating centre.



To get this look use:  
Walls → Dulux Off White WB13. Benchtop → Laminex Espresso. Cupboards → Laminex Waxed Oak.



Courtesy of Metricon



The colours in this palette can be used as alternate colours for any of the Natural Essence schemes.

Dulux colour co-ordinated with Laminex and essastone finishes.



# Natural Essence

Providing an elegant backdrop, whites and neutrals are timeless in scheming and easy to co-ordinate with timber, furnishings and accessories. To liven up your natural colour combination, add a splash of bold or bright colour.



COLOUR CONSULTANCY SERVICE → Call 13 25 25

To get this look use:  
 Main walls → Dulux Hog Bristle Quarter W A180.  
 Benchtops → essastone New Crystal Salt. Cupboard doors → Laminex Polar White.  
 Island bench insert → Laminex Seasoned Oak.



To get this look use:  
 Benchtop & cupboards → Laminex Satin Heartwood.



## Design Tip

Create interest with colour and different materials in the kitchen.

Timber floors are a 'softer' warmer surface than tiles.



To get this look use:  
Feature walls → Dulux Blind Date W A143. Main walls → Dulux Limed White W A168.  
Ceiling/Trims → Dulux Limed White Quarter W A168. Splashback → Dulux Domain D A224.  
Colour nearest to floor tiles → Dulux Oyster Linen W A215. Benchtops → essastone Macchiato.  
Cupboards → Laminex Young Beech. Drawers → Laminex White.

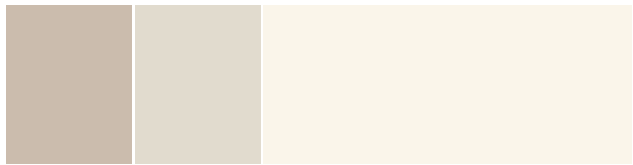
### Design Tip

Timber can set the tone in the kitchen and bathroom.

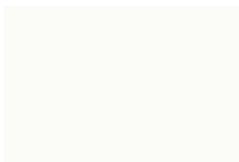
## Colour Schemes



Benchtop: **essastone Macchiato**



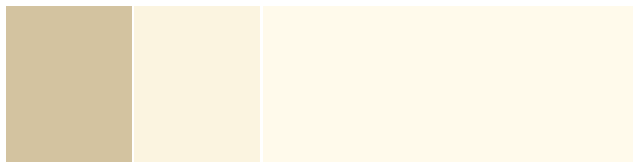
Scheme pictured: **Dulux Blind Date W A143 → Dulux Limed White W A168 → Dulux Limed White Quarter W A168**



Drawers: **Laminex White**



Cupboards & Island bench: **Laminex Young Beech**



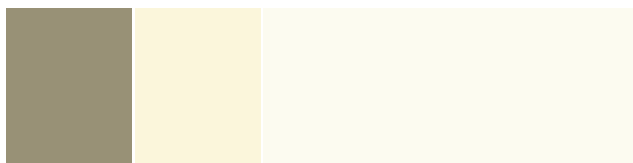
Alternate scheme: **Dulux Self-Destruct W A179 → Dulux Hog Bristle Half W A180 → Dulux Hog Bristle Quarter W A180**



Floor to match: **Dulux Oyster Linen W A215**



Splashback: **Dulux Domain D A224**



Alternate scheme: **Dulux Antique D A215 → Dulux Handmade Linen Half W A213 → Dulux Whisper White W B18**



To get this look use:  
Walls/Ceiling/Trim → Dulux White on White W B22. Splashback → Dulux Christobel W A120.  
Benchtop → essastone Crystal Chalk.

### Design Tip

Coloured backed glass splashbacks give a clean streamlined look to kitchens.

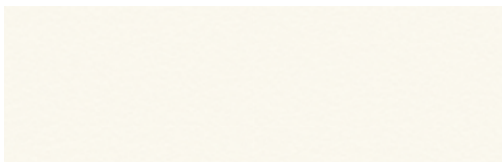
## Colour Schemes



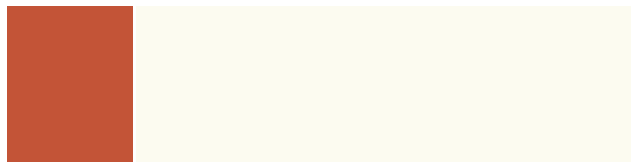
Benchtop: essastone Crystal Chalk (Velvet finish)



Scheme pictured: Dulux White on White W B22



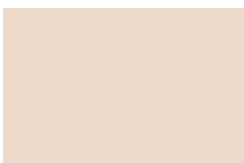
Cupboards: Laminex Alabaster



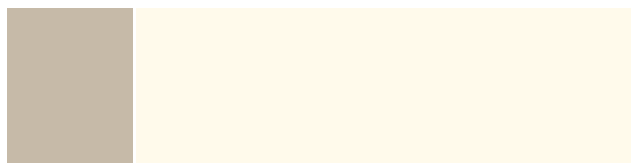
Alternate scheme: Dulux Orangeade O \*CP A100 → Dulux Whisper White W B18



Floor to match: Spotted Gum



Splashback: Dulux Christobel W A120



Alternate scheme: Dulux Tapestry Beige W A167 → Dulux Hog Bristle Quarter W A180



To get this look use:  
 Main walls → Dulux Natural White W B1. Ceiling/Trim → Dulux Vivid White W B12.  
 Colour nearest to floor tiles → Dulux Alpha Centuri UD A392.  
 Benchtop → essastone Porcini. Cupboards → Laminex Parchment.

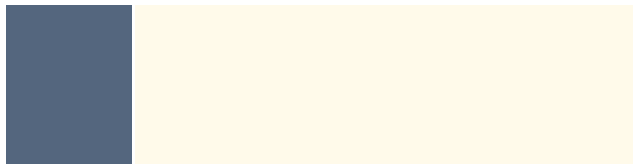
### *Design Tip*

Use towels to bring in splashes of colour to the bathroom.

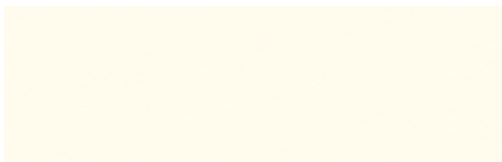
## *Colour Schemes*



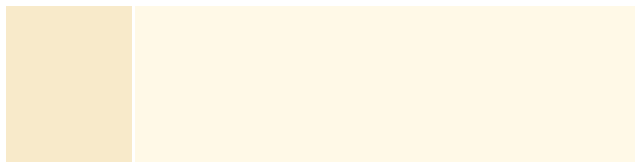
Benchtop: essastone Porcini



Scheme pictured: Dulux Alpha Centuri UD A392 → Dulux Natural White W B1



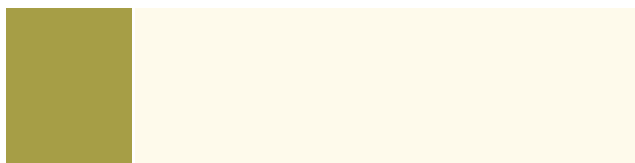
Cupboards: Laminex Parchment



Alternate scheme: Dulux Gentle Touch W A177 → Dulux Gentle Touch Quarter W A177



Floor to match: Dulux Ticking UD GR20



Alternate scheme: Dulux Plantain BY \*CP A220 → Dulux Grand Piano Quarter W A204



Check your colour using a Dulux sample pot available from your nearest paint store. Brush out a one metre<sup>2</sup> section and check it at different times of day!

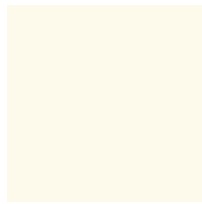
The colours in this palette can be used as alternate colours for any of the Urban Edge schemes.

Dulux colour co-ordinated with Laminex and essastone finishes.

\* Chromamax® Pigment®



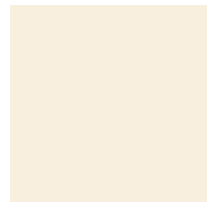
Arrow Shaft EB \*CP A190



Grand Piano Quarter W A204



Laminex Steel Blue



Sandy Day Half W B35



Vast Escape W A212



essastone New Sable Luxe



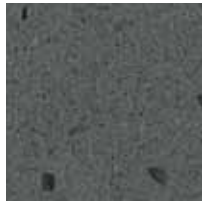
Purple Empire UD A431



Laminex Deep Sea



Rare Desire UD D20



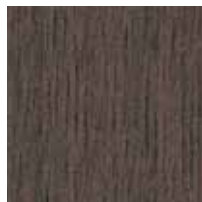
essastone French Black



Laminex Seasoned Oak



Caramel Craving W D5



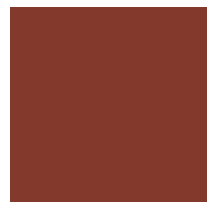
Laminex Nocturne Oak



Silver Illusion W D8



Rainmaker UD A371



Sheer Passion TR \*CP D12

## Urban Edge

Comprising of deep, rich tones through to earthy mid browns and lighter beiges, these colours are perfect for combining with today's contemporary furnishing styles and any home fashion accessories. To give your room that urban mood try using a deep or darker colour on one or even two walls in your space.



COLOUR CONSULTANCY  
SERVICE → Call 13 25 25

To get this look use:  
Main walls and ceiling → Dulux Vivid White W B12. Cupboards → Laminex Bronzeworks.  
Lower cupboards → Laminex Ash White.  
Bookshelves → Laminex Sublime Teak.



To get this look use:  
Walls → Dulux Natural White W B1.  
Benchtop → essastone New Crystal Salt.  
Cupboards → Laminex Espresso Ligna.



### Design Tip

Integrate living and dining areas with the kitchen through the same colour scheme.



To get this look use:  
 Feature wall → Dulux Knapsack D A203. Main walls → Dulux Tuft W A203. Ceiling/Trim → Dulux Vivid White W B12.  
 Colour nearest to splashback → Dulux Guitar EB \*CP A127. Colour nearest to floor tiles → Dulux Hog Bristle Half W A180.  
 Benchtops → essastone Dusk. Cupboards → Laminex Nocturne Oak. Island bench → Laminex Espresso.

\* Chromamax® Pigment®

### Design Tip

Ensure your refrigerator and stove are in proportion to the kitchen space.

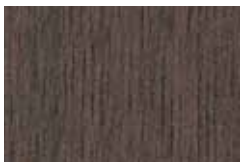
## Colour Schemes



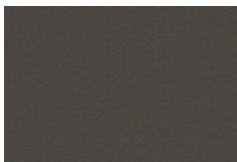
Benchtop: essastone Dusk



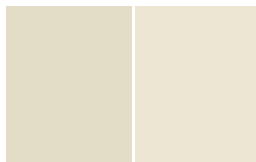
Scheme pictured: Dulux Knapsack D A203 → Dulux Tuft W A203 → Dulux Vivid White W B12



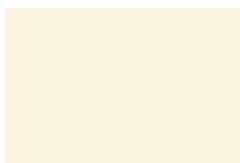
Cupboards: Laminex Nocturne Oak



Island bench: Laminex Espresso



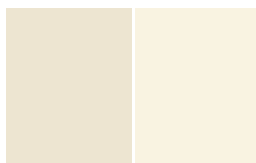
Alternate scheme: Dulux Beige Royal W A192 → Dulux Beige Royal Half W A192 → Dulux White On White W B22



Floors to match: Dulux Hog Bristle Half W A180



Splashback to match: Dulux Guitar EB \*CP A127



Alternate scheme: Dulux Grand Piano W A204 → Dulux Grand Piano Half W A204 → Dulux Lexicon Quarter W B11

Courtesy of Metricon



To get this look use:  
Feature wall → Dulux Carmen Miranda TR \*CP A88. Main walls/Ceiling/Trim → Dulux White Duck Quarter W A216. Floor → Blackbutt. Benchtops → Laminex Charcoal. Upper cupboards → Laminex Swiss Pear. Lower cupboards → Laminex Chamois.

\* Chromamax® Pigment®

Courtesy of Metricon



To get this look use:  
Feature wall → Dulux Deep Reed BY \*CP A232. Main walls/Ceiling/Trim → Dulux Pale Tendril Quarter W A228. Colour nearest to flooring → Dulux Snuggle Pie D A152. Benchtop → essastone Frappe. Drawers → Laminex Sublime Teak.

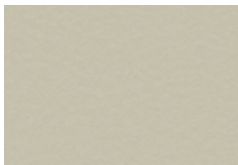
### Design Tip

Lighting should be a mix of function and mood.

## Colour Schemes



Benchtop: Laminex Charcoal



Cupboards: Laminex Chamois



Benchtop: essastone Frappe



Cupboards: Laminex Sublime Teak



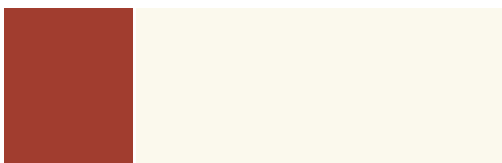
Cupboards: Laminex Swiss Pear



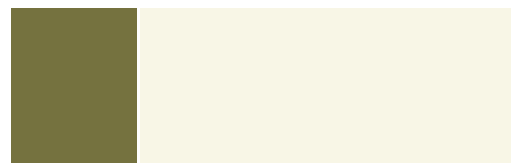
Floor: Blackbutt



Floor to match: Dulux Snuggle Pie D A152



Dulux Carmen Miranda TR \*CP A88 → Dulux White Duck Quarter W A216



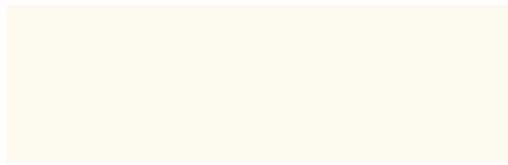
Dulux Deep Reed BY \*CP A232 → Dulux Pale Tendril Quarter W A228



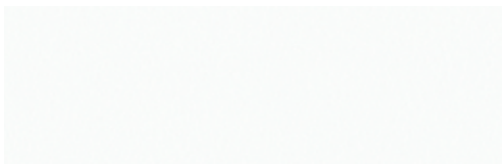
To get this look use:  
 Feature wall → Laminex Polar White. Main wall → Dulux Male Quarter W A156.  
 Colour nearest to floor → Royal Oak Flooring (White Smoked Oak). Benchtop → Laminex Moose.  
 Island bench insert/Shelves → Laminex Lustrous Elm.



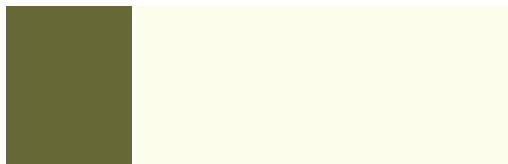
Benchtop : Laminex Moose



Scheme pictured: Dulux Male Quarter W A156



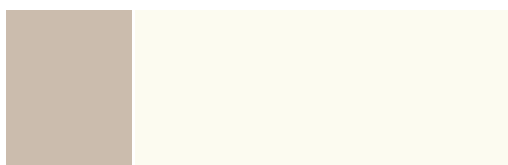
Cupboards: Laminex Polar White



Alternate scheme: Dulux Base Camp BY \*CP A247  
 → Dulux Green Frost Quarter W A249



Floor to match: Royal Oak Flooring, White Smoked Oak



Alternate scheme: Dulux Blind Date W A143 → Dulux Whisper White W B18



Check your colour using a Dulux sample pot available from your nearest paint store. Brush out a one metre<sup>2</sup> section and check it at different times of day!

The colours in this palette can be used as alternate colours for any of the Charcoal & Greys schemes.

Dulux colour co-ordinated with Laminex and essastone finishes.

\* Chromamax® Pigment®



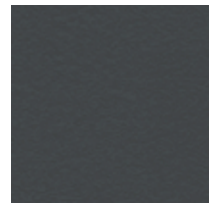
Ticking UD GR20



Simone Weil W GR20



Ashville W GR6



Laminex Charcoal



Laminex Espresso Ligna



essastone New Crystal Salt



Grid UD GR17



Lexicon W B16



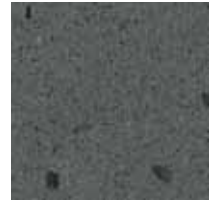
Old Eagle W GR5



Double Bass EB \*CP GR1



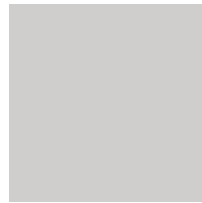
White On White W B22



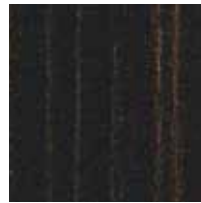
essastone French Black



Laminex Carbon Crush



Musing W GR3



Laminex Ebony Macassar



Oolong EB \*CP GR16

# Charcoals & Greys

For those who seek a sophisticated and sleek ambience, this palette will achieve your desired mood. These colours provide a dramatic backdrop and can be used in smaller portions or in large spaces. They can be used with powerful contrasting colours, such as reds or oranges to make a statement in your home. Varying shades of grey can also provide a neutral setting to allow for colourful artwork or for your treasured accessories to become the main focal point.

To get this look use:  
Main wall → Dulux Guild Grey D GR20. Benchtop →  
essastone French Black. Extended table →  
Laminex Alluvial Oak. Island face → Laminex Crystal Diamond.



To get this look use:  
Walls → Dulux White On White W B22. Benchtop → essastone New Byzantine.  
Splashback → Laminex Charcoal.



## Design Tip

Include seating in your kitchen design to make it inviting for family and friends.

Large mirrors equal large reflections which can make the space look bigger.



To get this look use:  
 Main walls → Dulux Lexicon W B16. Ceiling/Trim → Dulux Vivid White W B12. Splashback → Dulux Grid UD GR17.  
 Colour nearest to floor tiles → Dulux Ticking UD GR20. Benchtop → essastone French Black.  
 Return bench and shelves → Laminex Alluvial Oak.

\* Chromamax® Pigment®

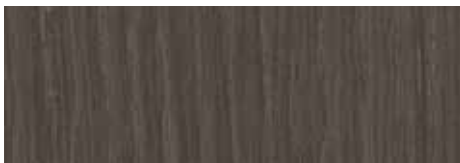
## Colour Schemes



Benchtop: essastone French Black



Dulux Grid UD GR17 → Dulux Lexicon W B16



Cupboards: Laminex Alluvial Oak



Dulux Guild Grey D GR2 → Dulux White on White W B22



Floor to match: Dulux Ticking UD GR20



Dulux Wild Dove W GR2 → Dulux Peplum Quarter W B28

## Design Tip

Add the contemporary touch to country style kitchens through appliances and seating.



Courtesy of Metricon  
To get this look use: Feature wall behind stove → Dulux Male Half W A156. Main walls → Dulux Male Quarter W A156. Ceiling/Trim → Dulux Peplum Quarter W B28. Flooring → Dulux Lexicon Quarter W B11. Benchtops → essastone Ebony Quartz. Cupboards → Laminex White.

## Country Chic

It's an elegant and romantic look where everything is in its place. Classic tones invite old fashioned elegance back into the contemporary home. Embrace the warm and casual feel of Provence by combining different surfaces together. Stone benchtops, glass cabinets and rustic metal light fittings come together to create an environment with a strong French influence.

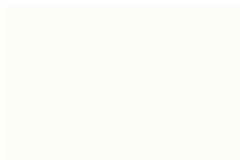


COLOUR CONSULTANCY  
SERVICE → Call 13 25 25

## Colour Schemes



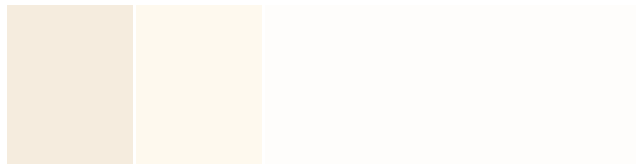
Benchtop: essastone Midnight Rendezvous



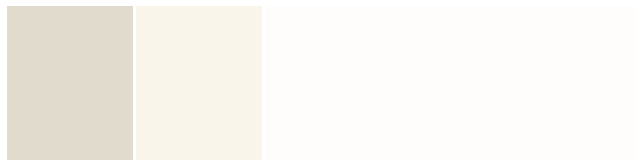
Cupboards: Laminex White



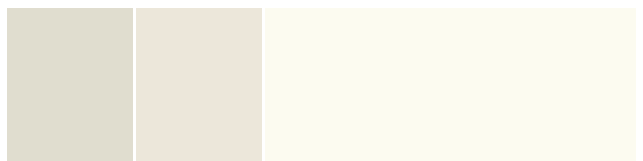
Floor to match: Dulux Lexicon Quarter W B11



Scheme pictured: Dulux Male Half W A156 → Dulux Male Quarter W A156 → Dulux Peplum Quarter W B28



Alternate scheme: Dulux Limed White W A168 → Dulux Limed White Quarter W A168 → Dulux Lexicon Quarter W B11



Alternate scheme: Dulux White Duck W A216 → Dulux White Duck Half W A216 → Dulux Whisper White W B18



To get this look use: Main walls/Ceiling/Trim → Dulux Lexicon Quarter W B11. Colour nearest to splashback tiles → Dulux Tranquil Retreat W GR24. Colour nearest to flooring → Dulux Lexicon W B16. Benchtops → Laminex Ebony Macassar. Island bench drawers → Laminex Ebony Macassar. Island bench insert → Laminex Olympia Red. Cupboards → Laminex White. Cupboard feature → Laminex Olympia Orange.

Courtesy of Metricon



To get this look use: To get this look use: Feature wall → Dulux Mitchell Blue D A329. Main walls/Ceiling/Trim → Dulux White On White W B22. Colour nearest to flooring → Dulux White On White W B22. Benchtops → essastone New Crystal Salt. Splashback → Laminex Black. Cupboards → Laminex Polar White Gloss.

# Colour Splash

Bold and energetic, a splash of strong colour can brighten any room. Daring colour can define an individual's personality. There are endless ways of combining colours within this dramatic and adventurous palette. These can be changed as the mood takes you. By using a strong colour you can instantly create a statement and add drama to your room.

## Design Tip

Pop colour works beautifully with neutrals, whites and blacks.

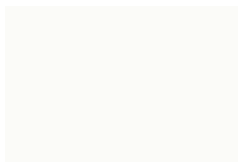
## Colour Schemes



Benchtop & Island bench drawers: Laminex Ebony Macassar



Island bench insert: Laminex Olympia Red



Cupboards: Laminex White



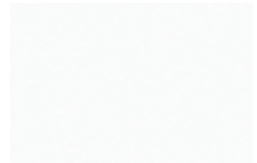
Cupboard Feature: Laminex Olympia Orange



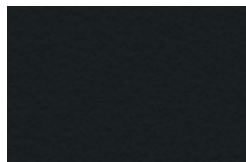
Walls & ceiling: Dulux Lexicon Quarter W B11



Benchtop: essastone New Crystal Salt



Cupboards: Laminex Polar White Gloss



Splashback: Laminex Black



Floor to match: Dulux White On White W B22



Dulux Mitchell Blue D A329 → Dulux White On White W B22

# Which paint where?

## Interior walls

### Dulux Wash & Wear® Kitchen & Bathroom

A moisture resistant finish with superior washability for wet areas such as bathrooms, laundries and kitchens. With Mouldshield® + Antibacterial technology, Wash & Wear Kitchen & Bathroom is ideal for both walls and ceilings. Guaranteed mould resistance for 7 years. Available in low sheen and semi gloss.

### Dulux Wash & Wear® Wash & Wear with 101 Barrier Technology™

creates a hard wearing finish that's mark resistant, scuff proof and easy to clean. Wash & Wear® is an Eco Choice® paint so it's low in VOCs, which means less air pollution and low odour.



## Precoats

### Dulux 1 Step® Acrylic Primer Sealer & Undercoat

A water based precoat that has the convenience of being a primer, sealer and undercoat in one. Suitable for the complete preparation of interior and exterior surfaces.



*Walls*  
Dulux Lexicon W B16



*Ceiling*  
Dulux Vivid White W B12



*Splashback*  
Match to Dulux Zenith Heights Quarter W A312

## Ceilings

**Dulux Wash & Wear® Kitchen & Bathroom Ceiling**  
A flat finish with extra hiding power to cover surface imperfections. Guaranteed mould resistance for 5 years.

**Dulux Once® Ceiling White**  
A flat finish that hides surface imperfections in one easy coat. Ideal for painting new ceilings.



## *Window frames, doors and trim*

**Dulux Aquanamel®**  
A water based interior and exterior enamel that dries to an ultra-smooth and hard wearing finish. Available in High Gloss and Semi Gloss.

**Dulux Super Enamel™**  
An oil based, tough, enamel available in High Gloss (interior/exterior) and Semi Gloss (interior).

## *Benchtop*

To get this look use:  
essastone Midnight Rendezvous

## *Cupboards*

To get this look use:  
Laminex Polar White

# Remember...

ONLY Dulux paint is formulated for tinting to the exact Dulux colours you select



Dulux Eco Choice paints emit less VOCs\* so they are better for the environment compared to paints with higher VOCs. This means you can breathe easy knowing you are making the right choice for both your walls and your family.

\*Eco Choice paints contains less than 5g per litre (untinted and tinted) of VOCs. VOCs (Volatile Organic Compounds) contribute to atmospheric pollution.

^ Wash & Wear and Wash & Wear Kitchen & Bathroom Semi Gloss, Low Sheen and Flat bases are Eco Choice paints (untinted and tinted).

[dulux.com.au](http://dulux.com.au) Dulux Customer Service → 13 25 25  
[laminex.com.au](http://laminex.com.au) [essastone.com.au](http://essastone.com.au) Laminex and essastone Customer Service → 13 21 36

Dulux, Laminex and essastone colours shown are as close as possible to actual colours. Always confirm your colour choice with Dulux Colour Chips, Dulux Colour Solutions Sample Pots, Laminex chips and essastone samples. The colours of the photographs depicted in this brochure are as close to the Dulux, Laminex and essastone ranges as photographic lighting and modern printing processes allow. Colour finish combinations are subject to availability. Colour/finishes shown are available at the time of publication, but may be withdrawn. Laminex dark colours and gloss finishes require more care and maintenance than light-coloured and lower-gloss surfaces.

©Dulux, Wash & Wear, Worth doing, worth Dulux, Eco Choice, Once, Colour Solutions, Aquanamel, 1 Step, Mouldshield, ChromaMax and the sheep dog device are registered trade marks. ™101 Barrier Technology is a trade mark.

The Laminex Group. A division of Laminex Group Limited ABN 98 004 093 092.  
©Laminex and essastone are registered trademarks of The Laminex Group.

FSC® is an independent, non-governmental, not for profit organisation established to promote the responsible management of the world's forests. Products carrying the FSC® label are independently certified to assure consumers that they come from forests that are managed to meet the social, economic and ecological needs of present and future generations.

Printed on FSC® Certified Paper



Check your colour using a Dulux sample pot available from your nearest paint store. Brush out a one metre² section and check it at different times of the day!

**\*CP ChromaMax® Pigment®**  
These bases are pigment rich, delivering superior colour with exceptional hiding power.

Dulux Australia  
1956 Dandenong Rd Clayton  
Vic 3168 Australia

The Laminex Group  
90-94 Tram Rd Doncaster  
Vic 3108 Australia

